

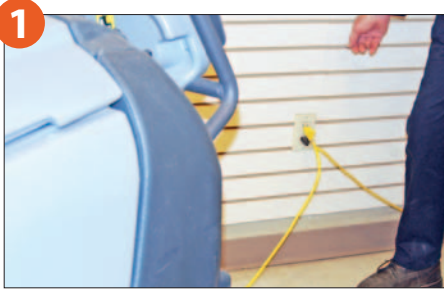
Equipment Maintenance Procedures



FLEXPOL PRODUCTS LIMITED

AUTOMATIC FLOOR SCRUBBERS MAINTENANCE

Daily Maintenance



1 Charge batteries at the end of your shift.



2 Drain and rinse out recovery tank. Inspect and empty debris catch cage if present.



3 Remove pad holder and pad. Remove pad and rinse out. Hang to dry.



4 Remove and clean squeegee assembly. Check blades for wear or damage. Flip squeegee blades if required.



5 Check bumper wheels and brush skirts for damage.



6 Wipe down exterior of machine to keep it looking good.

Weekly Maintenance



1 Before inspecting wet/acid batteries you are required to wear appropriate PPE (Nitrile chemical resistant gloves, goggles, apron, closed toe shoes)



2 Inspect and clean solution filter.



3 Check battery terminals for corrosion. Tighten terminals if required.

*Check water levels in wet/acid batteries. (does not apply to Gel or AGM batteries).

Monthly Maintenance



1 Inspect caster wheels and squeegee guide wheels for string/hair etc.



2 Lubricate pivot joints with light oil. Do not overuse.

FLOOR SCRUBBERS MAINTENANCE

Daily Maintenance



1 Inspect electrical cord for cuts or damage. Make sure the ground prong on the plug is intact.



2 Inspect handle and adjust clamp for proper function. Lightly lubricate handle clamp so it slides easily on the handle shaft.



3 Inspect trigger lockout on handle assembly. Make sure it operates properly.



4 Ensure that the pad holder is not damaged and will install correctly.



5 Store machine in an upright position with the cord wrapped around the handle.



6 Make sure that the pad holder is removed from the machine when being stored.

WET/DRY VACUUM USE & MAINTENANCE



1 Inspect electrical cord for cuts or damage. Make sure the ground prong on the plug is intact.



2 Empty and rinse recovery tank after use. Leave motor off machine to allow the tank to air out.



3 Remove pleated paper filter if picking up water or stripper. Use for fine dust only.

UPRIGHT VACUUM USE & MAINTENANCE

Daily Maintenance



1 Inspect electrical cord for cuts or damage. Make sure the ground prong on the plug is intact.



2 After use, clean the exterior of the vacuum using a damp cloth and a mild, soapy solution.



3 Wrap the electrical cord over the cord hooks.

Weekly & Monthly Maintenance



1 Replace paper bags frequently.



2 Check that secondary filter(s) are kept clean. If the secondary filters are foam, wash in clean water. Ensure the filter is dry before re-installing.



3 Change HEPA filter every 6 months.

If the vacuum is not picking up properly, check the following



1 Ensure the height adjustment is set properly.



2 Make sure the beater bar is turning. Look for a broken belt.



3 Make sure the filter or bag is not plugged.

If the vacuum is not picking up properly, check the following



4 Ensure the hoses or the connection between base and upper body is not clogged with debris.



5 Ensure the bag door is sealed properly and the vacuum bag is installed correctly.

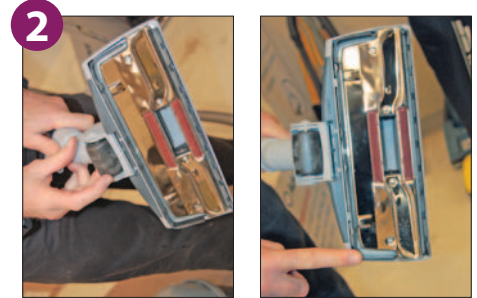
CANISTER VACUUM MAINTENANCE

Daily Maintenance

Note: A dry canister vacuum is designed to be used in dry conditions only. Picking up water or slush will cause the vac bag to disintegrate.



1 Inspect electrical cord for cuts or damage. Make sure the ground prong on the plug is intact.



2 Inspect base on floor tool. Ensure that the roller mechanism (if it has one) is free of lint and hair. Also ensure that the bristle strip moves down for hard floors and up for carpeted floors. Do not use the metal base on concrete or hard floors.



3 Ensure that the hose locks in place when attached to the body of the vacuum.



4 Many vacuums have a cloth filter which can be removed and cleaned. Either vacuum it with another vacuum or blow it out with compressed air.



5 Ensure that the paper bag is checked frequently and not allowed to be over-filled.

CARPET CLEANER USE & MAINTENANCE

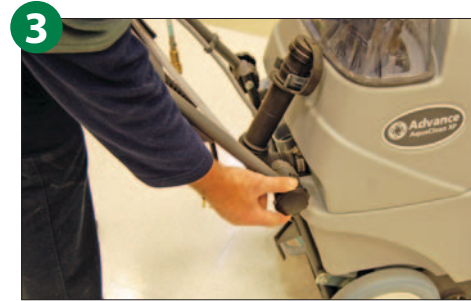
Daily Maintenance



1 Always vacuum area to be cleaned before extraction begins!



2 Inspect electrical cord for cuts or damage. Make sure the ground prong on the plug is intact.



3 Adjust handle for proper height.



4 Add one capful of De-Foamer to the recovery tank (before each tankful of clean water).



5 Fill solution tank with clean warm water. Do not over dose the chemical.



6 Ensure that the intake screen in the recovery tank is clean and that the float ball is free.



7 Inspect spray jets for uneven spray pattern. Clean as necessary. Ensure that the suction shoe is clear.



8 Drain and rinse recovery tank. Leave lid open to allow air circulation.



9 Store with brush in raised position.

SALT SPREADER CARE & MAINTENANCE

Daily Maintenance



1 Ensure that the gate adjustment lever moves freely. Lubricate the pivot points with oil to prevent corrosion.



2 When the winter season is over, empty any remaining salt out of the hopper and wash it out.



3 When the winter season is over wash the entire underside of the spreader and check for any damage.



4 Clean and grease the gear mechanism as well as the axle bushings. Oil all pivot points. Store in a dry area.

NOTE: Salt is very corrosive—pay particular attention to rust on pivot points etc. Never leave salt in the hopper for extended periods.

Salt in the bottom of the hopper can solidify causing damage to the gate mechanism.

MINI SCRUBBER & MAINTENANCE

Daily Maintenance



1 This machine c/w an on-board battery charger and must be plugged in to charge the battery. Ensure that the machine is charged after every use.



2 If the machine does not power up, check the circuit breaker located under the rear hood.



3 Ensure that the lid assembly sits properly on top of the two tanks.



4 Ensure that the float mechanism is clean and free of any blockages or damage.



5 Empty and rinse out the recovery tank when finished using. Do not store machine with dirty water in this tank.



6 Ensure that the recovery tank suction gasket is clean and undamaged.



7 Ensure that the solution tank suction gasket is clean and undamaged.



8 Tip the machine on its back and inspect the squeegee assembly. Make sure the suction port is clean and that the squeegee blades are in good condition.

Inspect the caster wheels for damage and that they move freely. Remove any hair and debris from the caster bushings.



9 The brush and pad holder can be installed and removed easily when the machine is tipped on its back.

Replace the pad on the pad holder when it becomes worn. The pad can be cleaned in your wash sink if required.

ELECTRIC PRESSURE WASHER USE & MAINTENANCE

Daily Maintenance

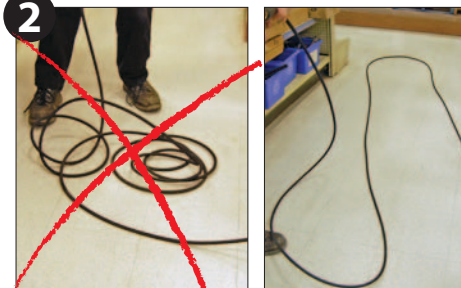


Safety First! Do not point the pressure washer at anyone or anything that could become damaged.

Always wear eye protection to protect against debris or water bouncing back onto your face.



When using the pressure washer, cleaning chemical can be added into the water flow. Put the chemical tube into the chemical container making sure that the suction screen is clean. Adjust the spray nozzle to the chemical setting. The water pressure should come out at a much lower pressure allowing the chemical to be sucked into the machine.



The high pressure hose is steel reinforced. Damage will occur if it is laid on the ground in tight loops or twisted around tight bends. When using the hose, always lay it out loosely first.

NOTE: Do not drive over the hose with a car as the weight could crush the hose.



Most pressure washers come with a GFCI plug. If there is no power at the machine, try re-setting the GFCI first.



If there are leaks at the wand end or the ends of the hoses, inspect for damaged or missing o-rings. Replace as necessary.

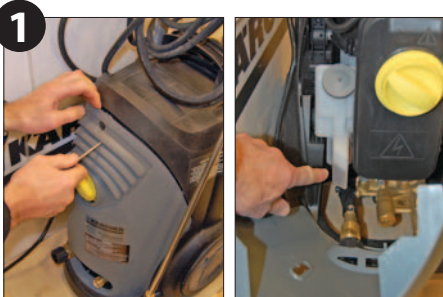


The Karcher electric PW c/w a three way nozzle. To change the nozzle setting, rotate the end to one of the three settings.



The inlet of the pressure washer will have an inlet filter. Ensure that is kept free from debris and dirt. Also make sure the garden hose fitting has a proper gasket installed.

Storage



The Karcher HD1.8/13C has an oil reservoir level indicator. Remove the cover to inspect the level before each use.



If storing your machine in an un-heated area, protect the pump with anti-freeze or pump protection.

GAS PRESSURE WASHER USE & MAINTENANCE

Daily Maintenance



Safety First! Do not point the pressure washer at anyone or anything that could become damaged.

Always wear eye protection to protect against debris or water bouncing back onto your face.



Red is 0 degree
Yellow is 15 degree
Green is 25 degree
White is 40 degree
Black is chemical injection



Use the black tip when adding chemical

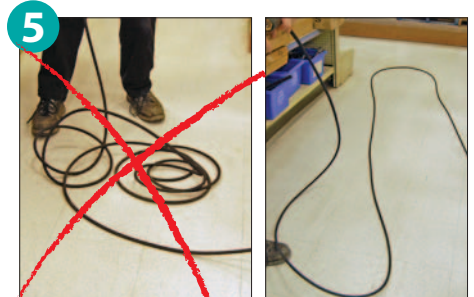
Gas powered pressure washers typically come with a set of interchangeable nozzles. These are colour coded and relate to the angle of spray. Pick the proper tip for the job requirements.



The inlet of the pressure washer will have an inlet filter. Ensure that is kept free from debris and dirt. Also make sure the garden hose fitting has a proper gasket installed.



Always check the engine oil before using. Ensure that the oil level is not overfilled or under filled.



The high pressure hose is steel reinforced. Damage will occur if it is laid on the ground in tight loops or twisted around tight bends. When using the hose, always lay it out loosely first.

NOTE: Do not drive over the hose with a car as the weight could crush the hose.

Storage



If storing your machine in an un-heated area, protect the pump with anti-freeze or pump protection.



Gas powered equipment should always have fresh gas in the gas tank. Empty the gas tank when putting the machine in storage or treat the gas with a gasoline additive.



FLEXO PRODUCTS LIMITED

NIAGARA FALLS

4777 Kent Avenue
Niagara Falls, ON. L2H 1J5
905.354.2723
1.800.263.2540

CAMBRIDGE

100 Sheldon Drive
Cambridge, ON. N1R 7S7
519.740.0770
1.800.265.6629

TORONTO

140 Buttermill Ave
Vaughan, ON. L4K 3X6
416.667.8875